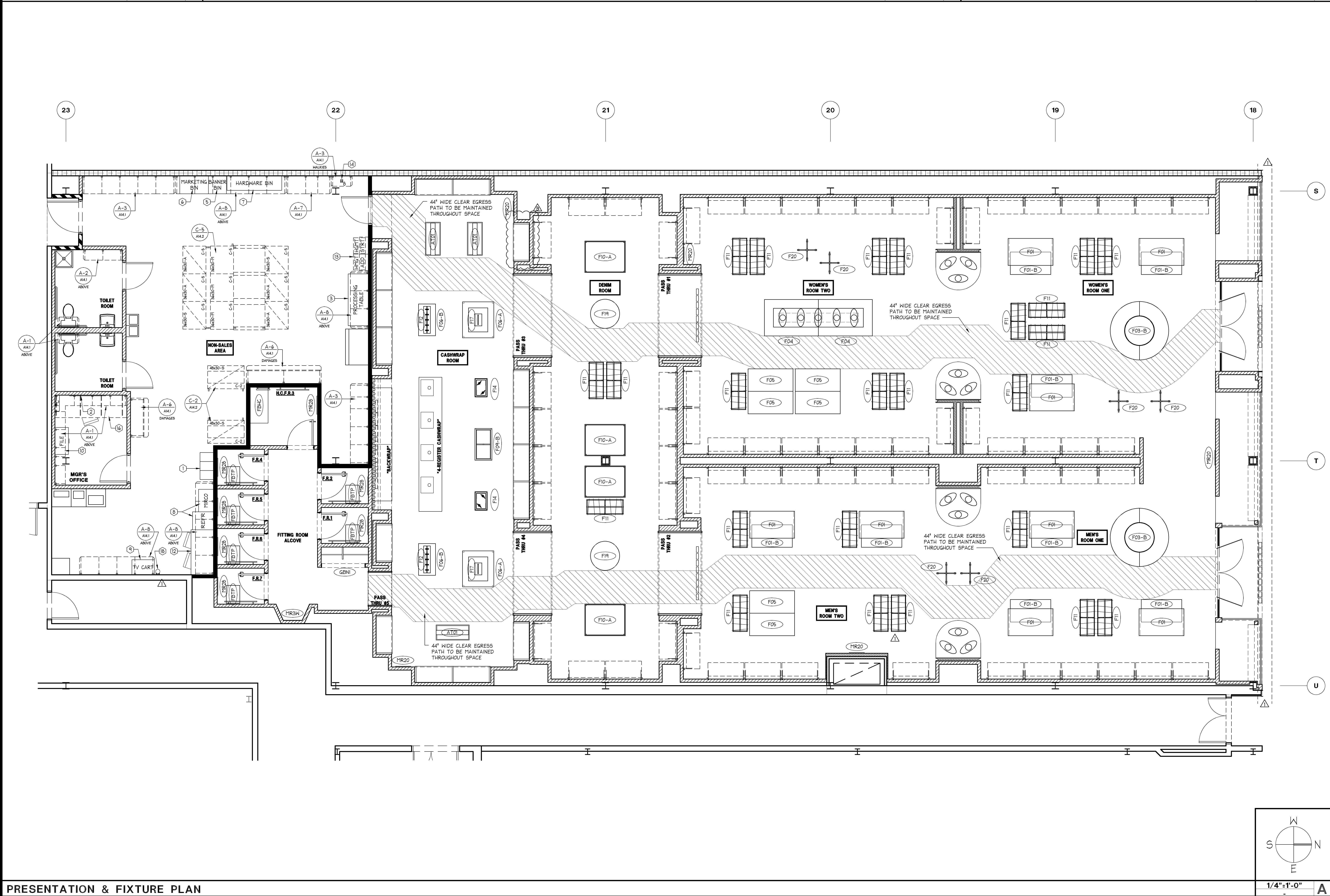


1. G.C. TO UNCRATE, COUNT AND ASSEMBLE FIXTURES AS REQUIRED, LOCATE, POSITION, AND INSTALL (IF REQ'D) FIXTURES AS SHOWN IN THE PRESENTATION PLANS AND/OR DIRECTED BY THE OWNER'S PROJECT MANAGER.
2. G.C. TO LOCATE, POSITION, AND INSTALL (IF REQ'D) STAFF TABLE, MANAGER'S DESK AND EQUIPMENT AS SHOWN IN THE PRESENTATION PLANS AND/OR DIRECTED BY THE OWNER'S PROJECT MANAGER.
3. G.C. IS RESPONSIBLE TO PROVIDE (1) 30 YARD TRASH CONTAINER FOR ALL INITIAL MERCHANDISE PACKING MATERIALS PRIOR TO STORE OPENING. DUMPSTER TO BE REMOVED AFTER MERCHANDISING.

UNIT QTY	UNIT TAG	UNIT/FIXTURE DESCRIPTION	SHEET NO.	FINISH SIZE	SALES AREA-PRESENTATION FIXTURES (CONTINUES)					SALES AREA-PRESENTATION FIXTURES (CONTINUES)					PRESENTATION PLAN KEYNOTES									
SALES AREA-FITTING ROOM					8	F01	3 TIER TABLE	-	-	60" X 36"	-	F09-A	LARGE IMPULSE TABLE	-	-	42-3/8" X 42-3/8"	13	LOCKERS - SECURE TO WALL BY G.C. - SEE DETAIL D/A14.3	18	HANGER STORAGE UNIT - SEE DETAIL A/A14.3				
6	FBTP	FITTING ROOM BENCH (TYP)	-	-	8	F01-B	TIER TABLE BUNK	-	-	55" X 30-1/2"	-	F09-B	SMALL IMPULSE TABLE	-	-	42-3/8" X 22-3/4"	14	WALKIE STORAGE						
1	FBHC	FITTING ROOM BENCH (HC)	D/A13.2	-	-	-	F02	PLATFORM	-	56" X 18"	4	F10	DENIM TABLE	-	-	54" X 42"	15	HANGROD STORAGE BIN						
-	GBN3	GO-BACK NICHE	D/A13.3	-	4'-0" X 4'-6"	-	F03-A	3 TIER HOTZONE TABLE	-	39"6 TOP, 84"6 BOTTOM	24	F11	A-FRAME RACK	-	-	49-1/4" X 19-1/8"	16	MANAGER'S LEDGE - SEE DETAIL G/A14.2						
1	GBN1	GO-BACK NICHE	A/A13.3	-	SEE DETAIL FOR SIZE	2	F03-B	2 TIER HOTZONE TABLE	-	40"6 TOP, 78"6 BOTTOM	2	F12	SUNGLASS FIXTURE	-	-	42 3/8" X 22 1/4"	17	LINGERIE BIN						
SALES AREA-MIRRORS					-	F03-C	HOTZONE ENTRY CUBE	-	-	34" X 44" X 18"	2	F14	WATCH TOWER	-	-	24 3/4" X 16 1/2"	18	PLAN TUBE HOLDER - SEE DETAIL F/A14.3						
7	MR28	F.R. MIRROR, 3-WAY	G/A13.4	-	-	2	F04	LARGE RUNWAY TABLE	-	60" X 25" TOP, 72" X 48-1/2" BOTTOM	2	F17	FRAGRANCE RISER	-	-	16" X 9-3/4"	19	HARDWARE BIN - SEE DETAIL E/A14.3						
1	MR3M	MIRROR, WALL MTD. 3-WAY	A/A13.4	-	-	-	F04-C	SMALL RUNWAY TABLE	-	42" X 25" TOP, 54" X 48-1/2" BOTTOM	2	F19	MANNEQUIN RISER	-	-	39"	20	REFRIGERATOR / MICROWAVE						
5	MR20	MIRROR, WALL MTD.	E/A13.4	-	SEE DETAIL FOR SIZE	6	F05	PANT BUNK	-	60" X 30"	6	F20	T-STAND	-	-	25" X 25"	21	TV CART / SHELF						
SALES AREA-PRESENTATION FIXTURES					2	F06-A	LARGE ACCESSORY TABLE	-	-	48" X 41-3/4"	-	F21	CURVED RACK	-	-	64" X 22-1/2"	22	FILE CABINET						
3	AT01	ACCESSORY TOWER FIXTURE	-	-	41-1/4" X 20"	2	F06-B	SMALL ACCESSORY TABLE	-	42-3/8" X 22-3/4"	-	F22	STANCHION	-	-	7-1/2"	23	PC CART						
FIXTURE SCHEDULE					N.T.S.					F					PRESENTATION PLAN KEYNOTES					N.T.S.				



# EXPRESS

EXPRESS FASHION OPERATIONS, LLC  
d/b/a STORE DESIGN & CONSTRUCTION  
1 Express Drive Columbus, Ohio 43230  
Telephone: 614.474.4001 Express.com

712

PROJECT INFORMATION:  
EXPRESS  
SPRINGFIELD TOWN CENTER  
5844 C. C. 6847  
SPRINGFIELD, VA 22150

REVISIONS:  
1. 03/13/14  
2. 04/09/14  
3. 05/06/14

DATE: 03/13/14  
DESIGNED BY: JUB  
DRAWN BY: KING  
CHECKED BY: KMM

DATE ISSUED: 02/14/2014  
DESIGNED BY: JUB  
DRAWN BY: KING  
CHECKED BY: KMM

PRESENTATION & FIXTURE PLAN  
DRAWING NUMBER: A06.1

SHREMSHOCK  
Shremshock Architects, Inc.  
6100 S. Sandusky Rd. Westerville, OH 43081  
T: 614.545.4550 F: 614.545.4551 shremshock.com  
Gerald S. Shremshock, Architect  
Timothy J. Shremshock, Architect

ELITE CONSTRUCTION GROUP  
LAKE JACKSON, TX  
PHONE: 979-285-0712  
NOTE: THESE PRINTS HAVE BEEN  
REDUCED BY 50 PERCENT SCALE  
WILL BE 50 PERCENT OF WHAT IS  
NOTED ON PLANS